





Features

UNIT FEATURES

Original refinished oak flooring
 Painted steel six panel entry doors
 Duracore six panel interior doors
 High efficiency Energy Star in unit
 LG washer/dryer combo
 Energy star CFL lighting
 Premium 2 ½” wood faux blinds
 High efficiency individual Energy Star
 HVAC systems
 All interior finishes were replaced, including
 insulation, drywall, tile, base, window/door
 trim and casing
 Electrical and Water services were removed
 and replaced to current code
 R24 insulation on exterior walls
 R30 insulation in ceilings
 R48 insulation in roof
 New Marvin clad Ultimate windows
 Aiphone color video entry buzzer system
 Low VOC paint throughout

KITCHEN FEATURES

Cherry and Maple solid wood cabinets
 Stainless steel refrigerator, dishwasher,
 stove and microwave; Energy Star Rated
 Granite countertops
 Soft close drawers
 Brushed nickel hardware
 Stainless steel under mount sinks
 Brushed nickel pull out kitchen facet
 Individual high output kitchen exhaust fan

BATH FEATURES

Ceramic floors
 Wall to wall ceramic tile in bath
 Integrated ceramic soap dish and corner shelf
 Vanity with marble top
 Matching decorator mirror
 Brushed nickel fixtures
 Individual high output bath exhaust fan

BUILDING FEATURES

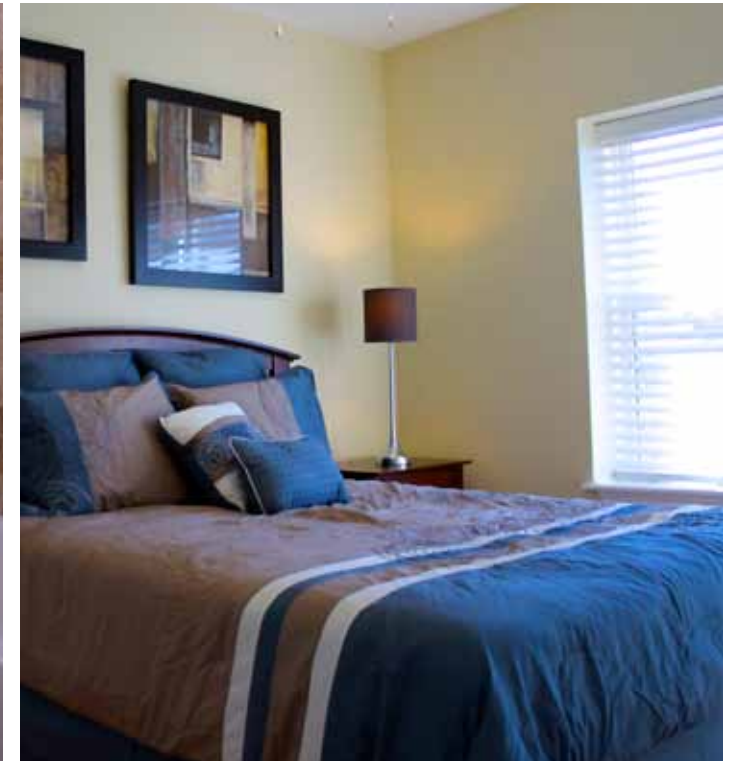
Decorative Historic Building exhibiting
 Glazed Masonry Details
 Original brick and stone finishes
 Security cameras throughout
 Privacy fence in courtyard
 Fully landscaped
 Enclosed rear trash dumpster
 New steel and wood decks
 New electrical services with ComEd
 New natural gas service with Nicor
 New phone services with AT&T
 New cable services with Comcast
 New storm/sewer service with inspection
 manhole to main
 New back drain tile sump pump system
 New sewer backflow prevention system

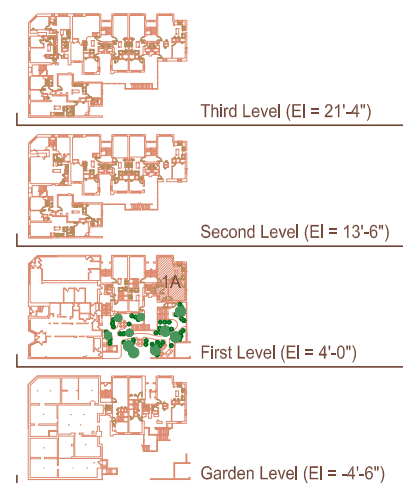
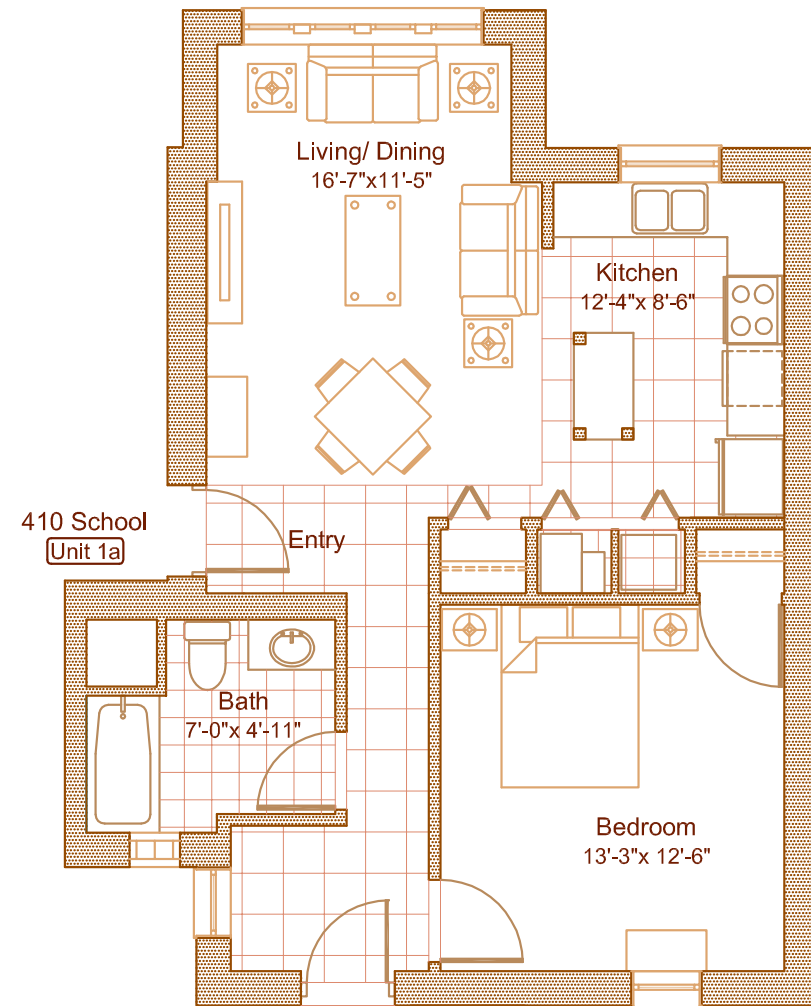
EXTERIOR FEATURES

Landscape entry on School Street
 Dedicated Village of Maywood parking
 with guest parking across the street
 One way dedicated street parking to reduce
 traffic flow
 Private landscaped rear courtyard with
 secure access with barbeque and seating areas
 New low voltage LED landscape lighting
 on School Street
 New low voltage LED landscape lighting
 in courtyard
 New dusk to dawn CFL entry lighting throughout
 New CFL lighting on decks, awnings and
 common areas
 New Village of Maywood street lighting
 on 5th Ave
 New sidewalks with brick pavers
 and landscaping

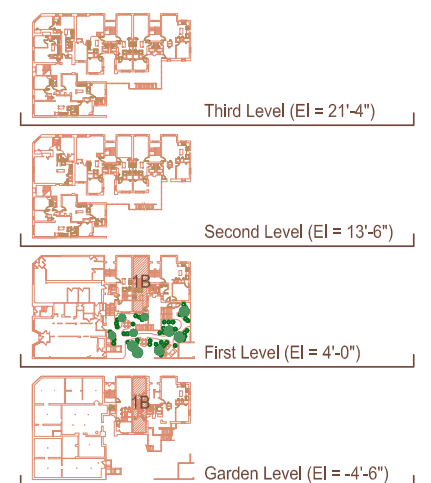
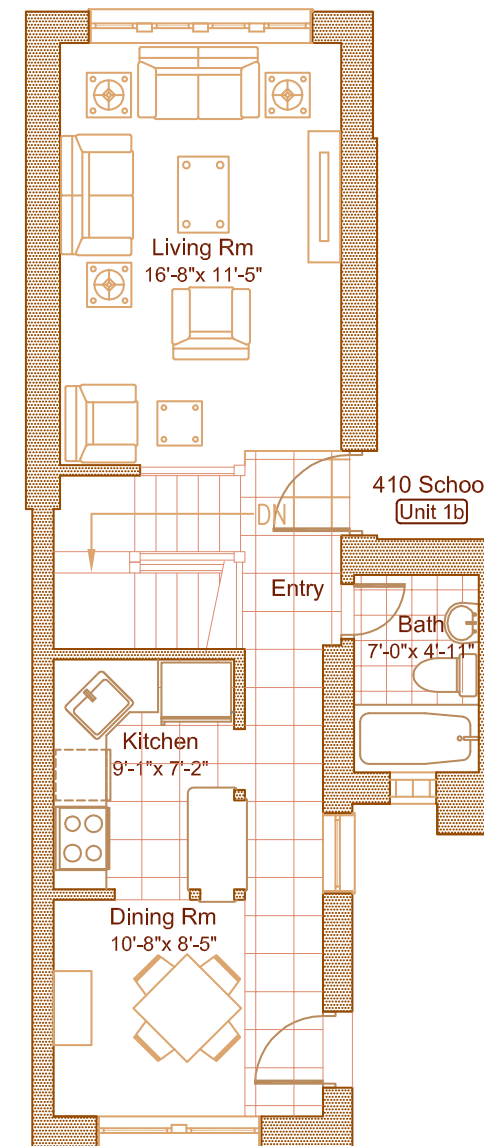
All specifications, features, design, price and materials are subject to
 change without notice. Room dimensions are approximate and vary
 depending on residence selected. Depicted floor plans and architec-
 tural renderings are only an artist's impression.

Photos

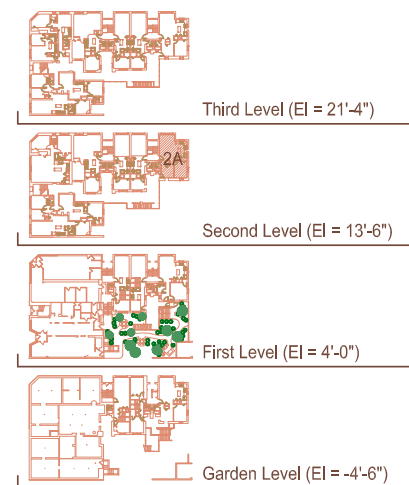
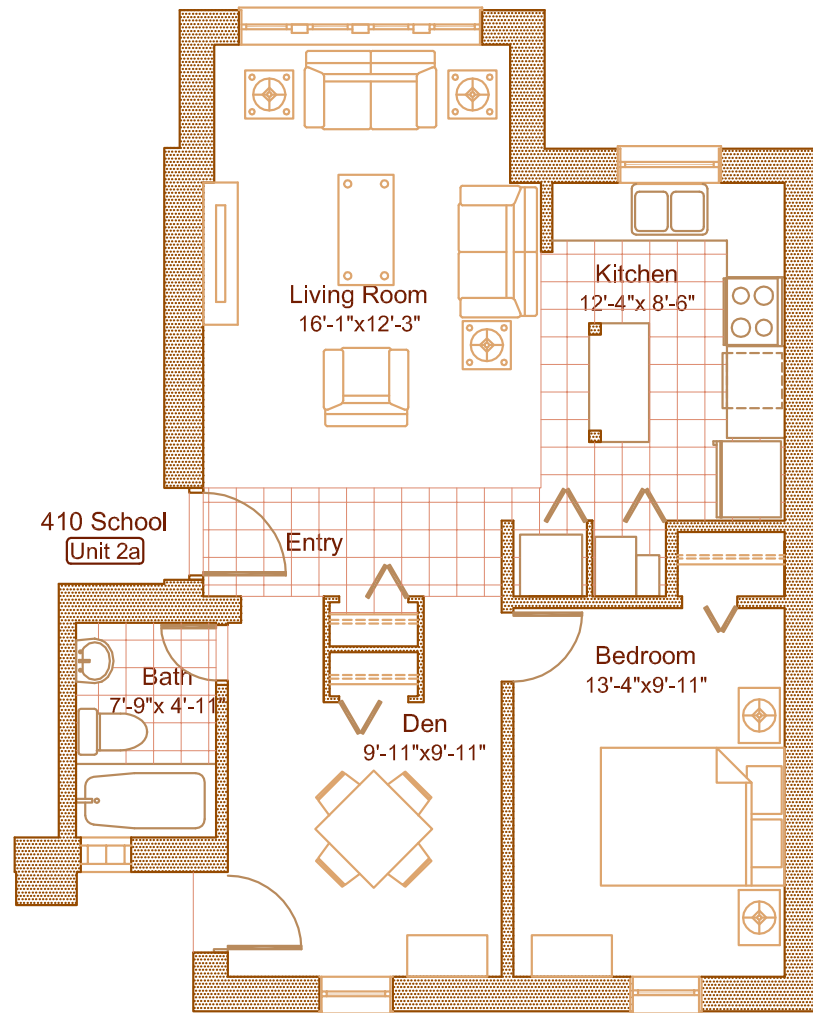




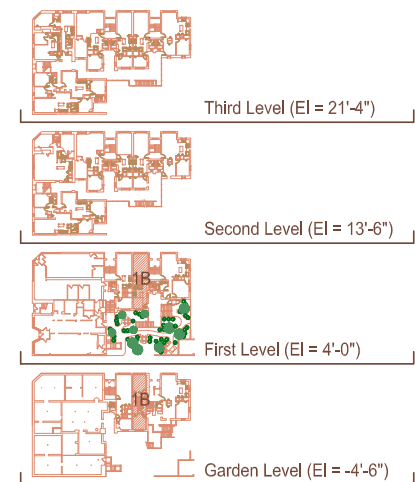
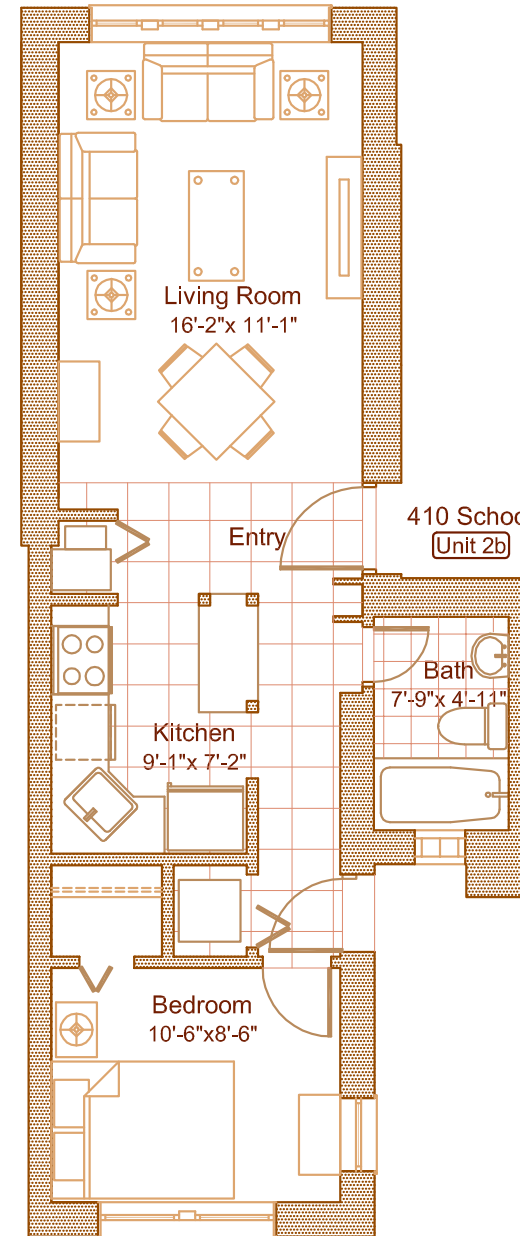
Unit 410-1A



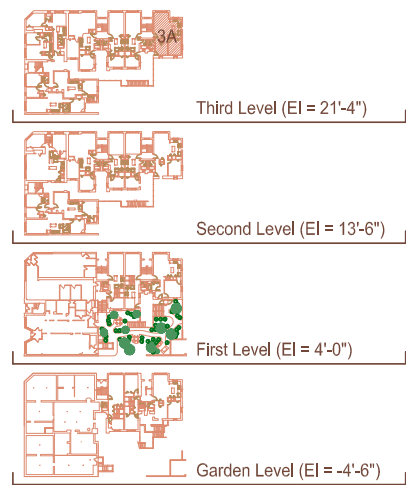
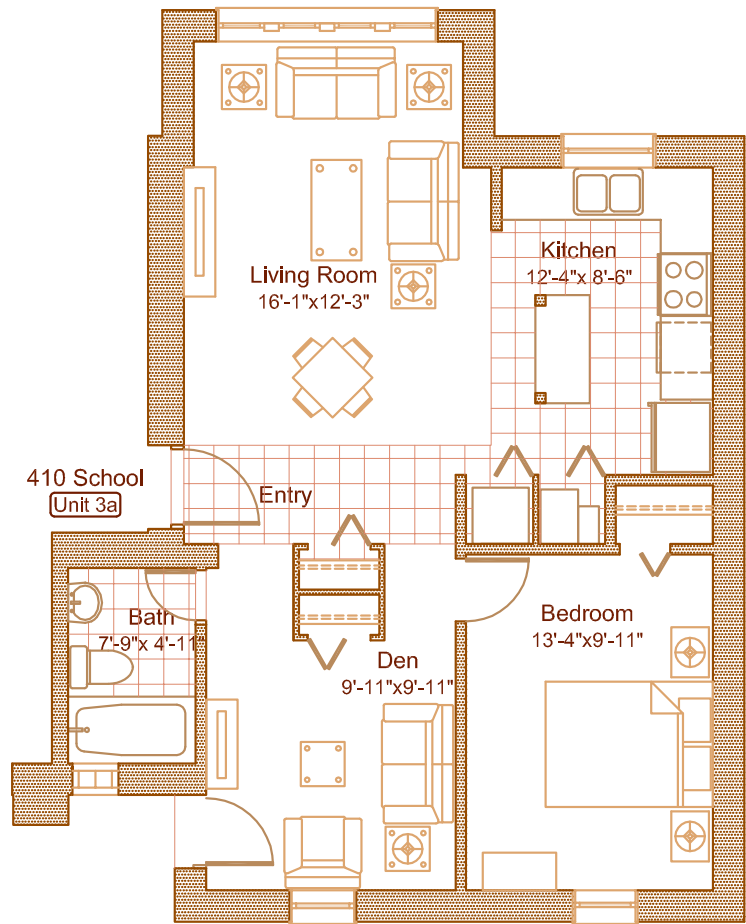
Unit 410-1B



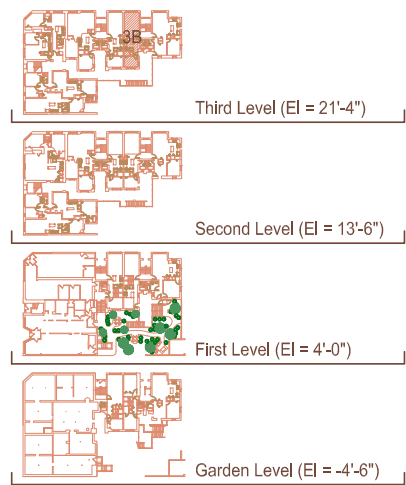
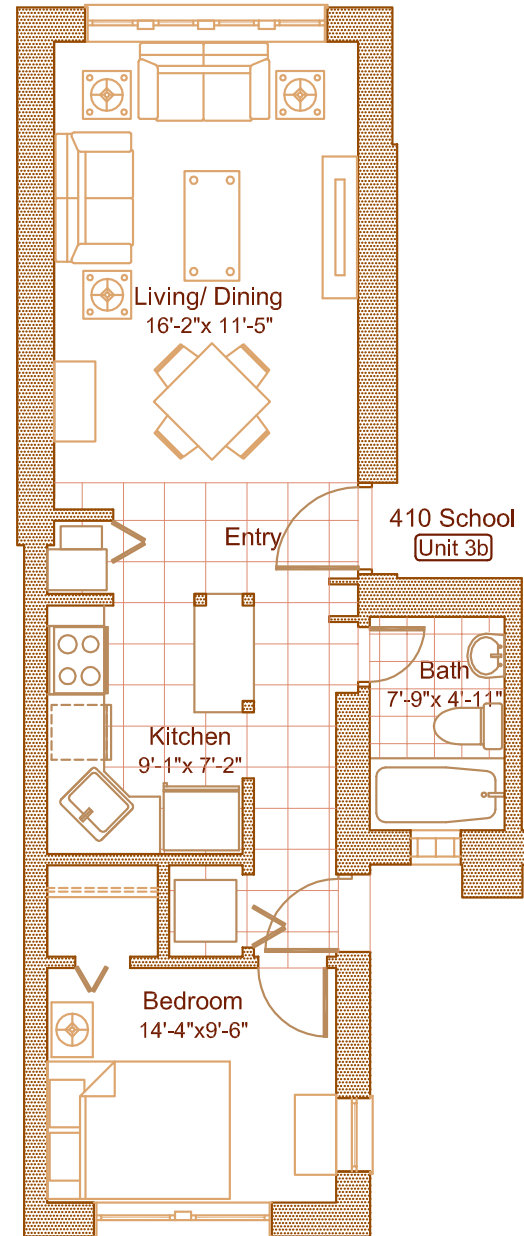
Unit 410-2A



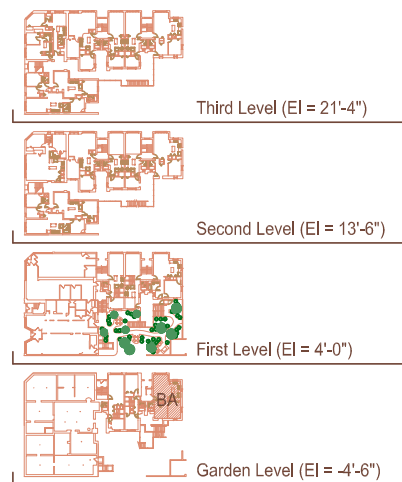
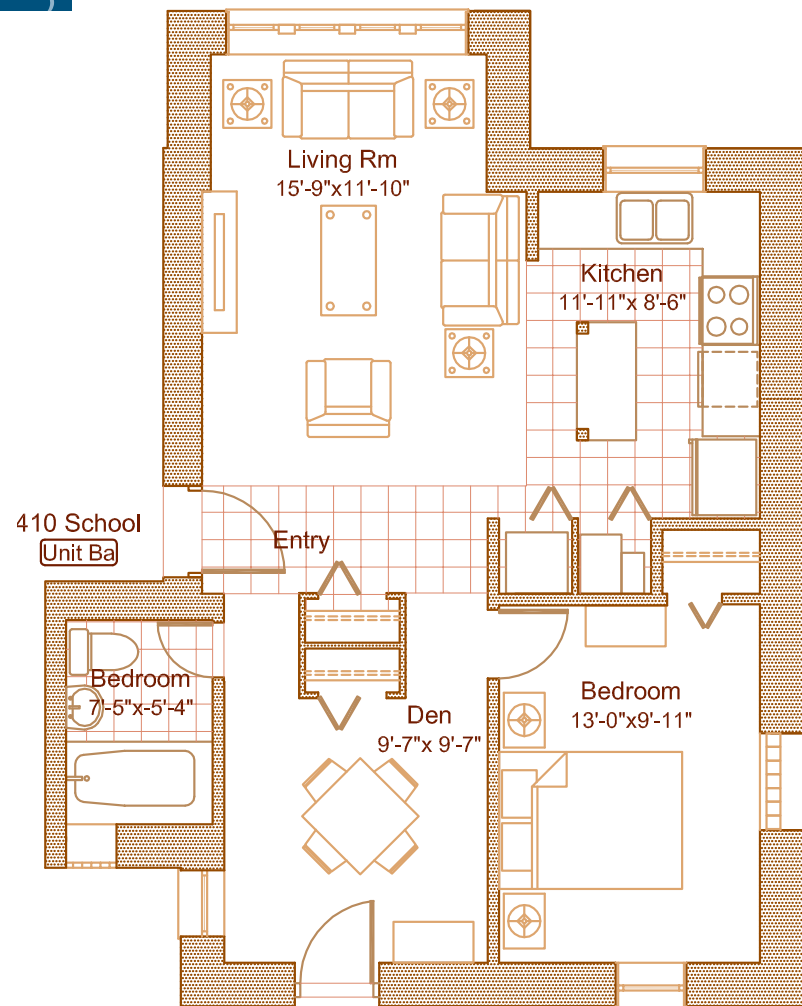
Unit 410-2B



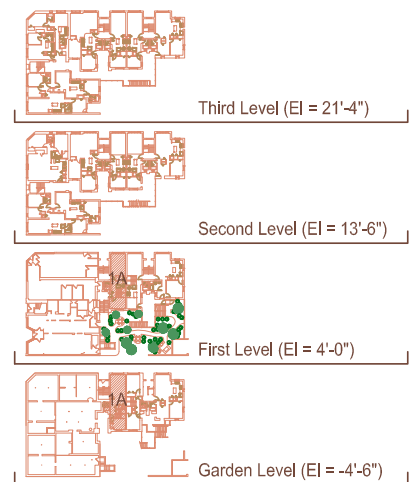
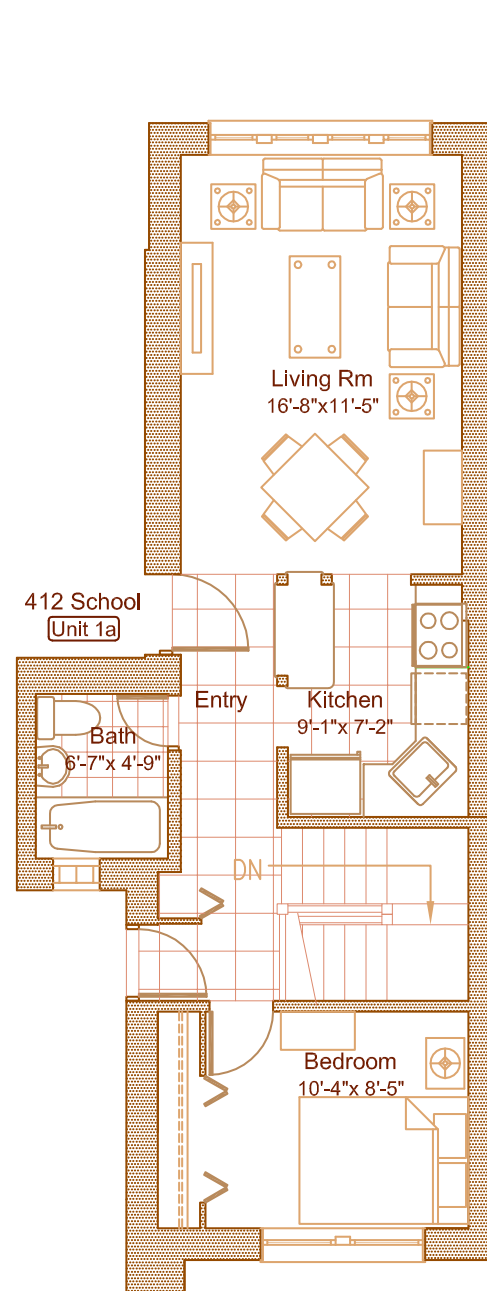
Unit 410-3A



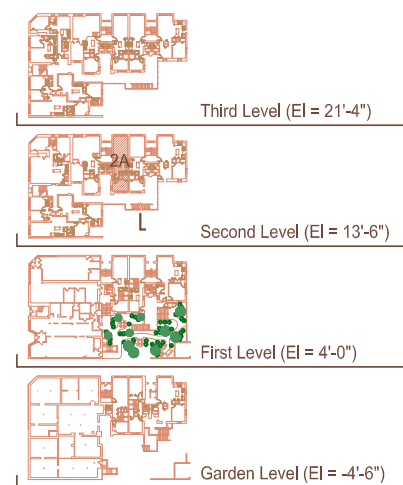
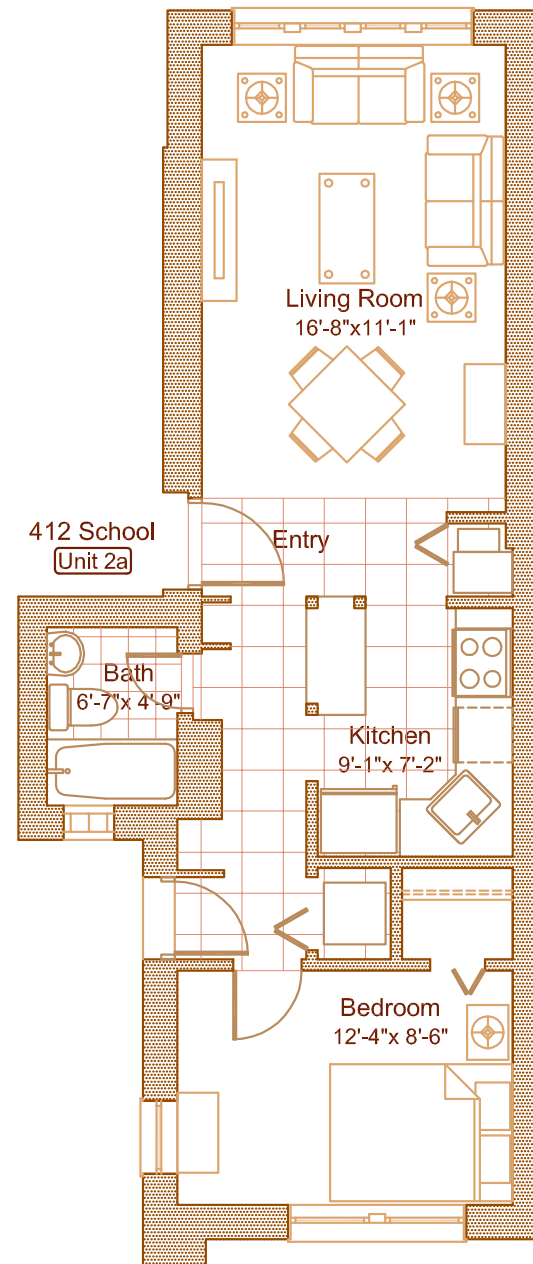
Unit 410-3B



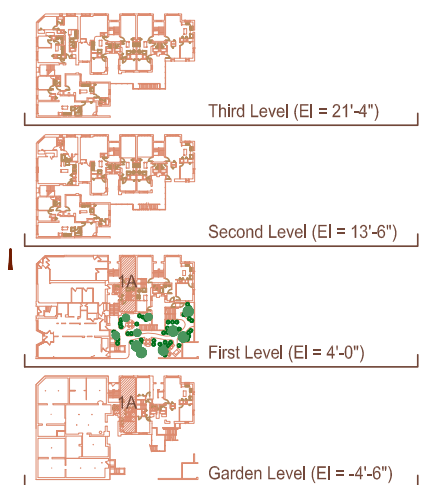
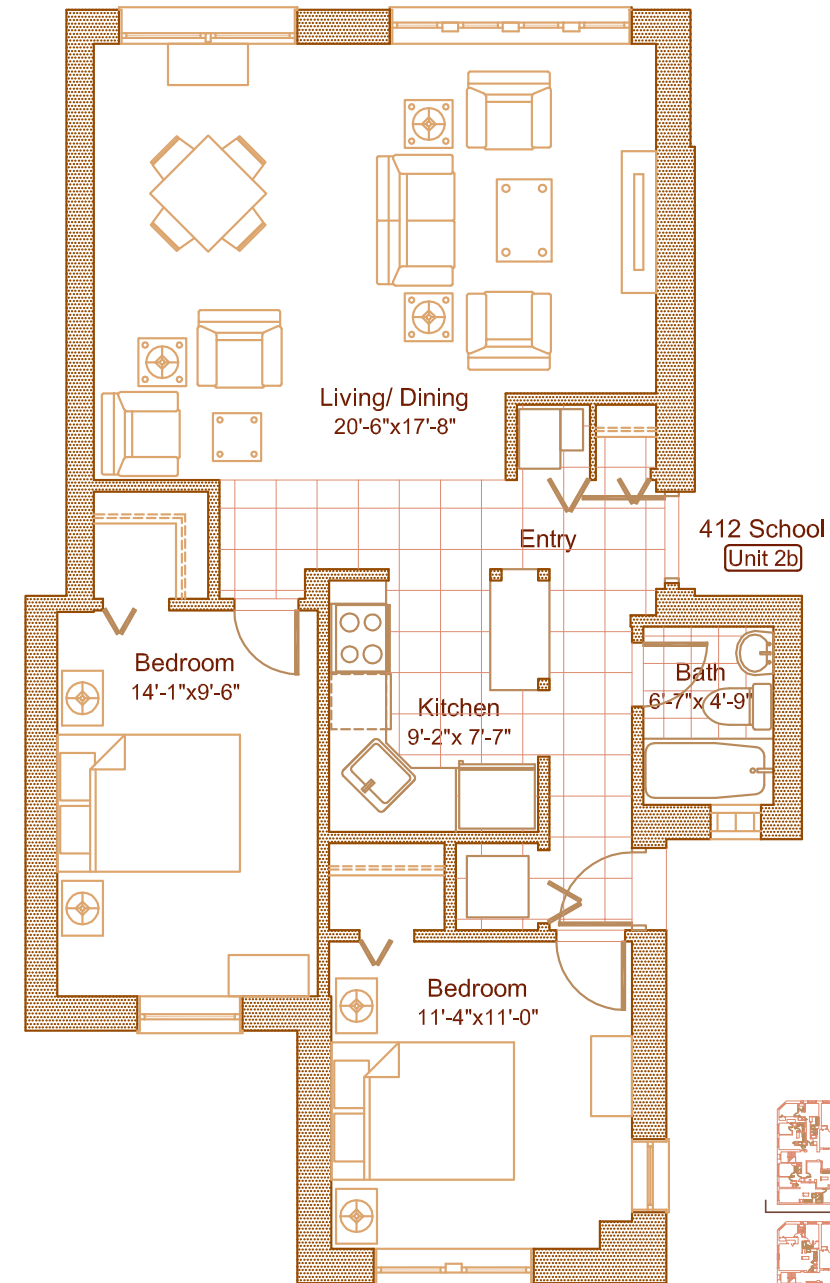
Unit 410-BA



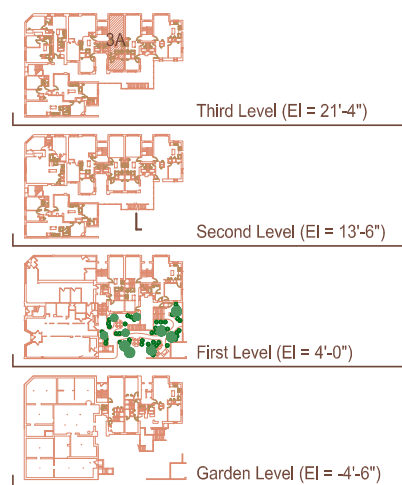
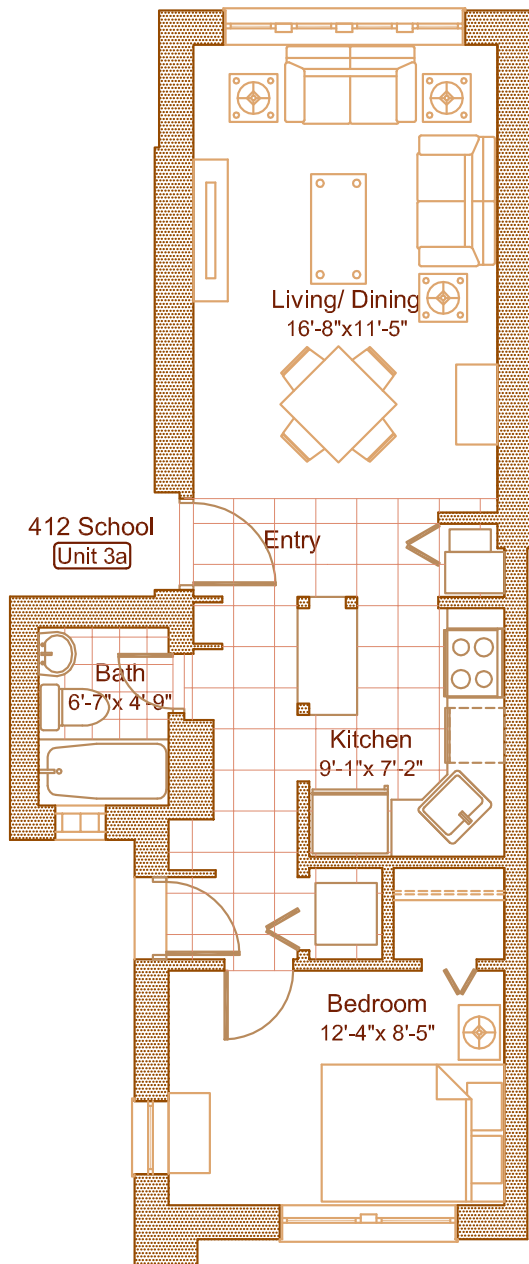
Unit 412-1A



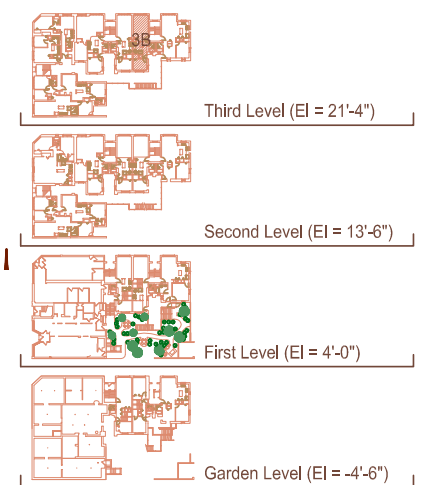
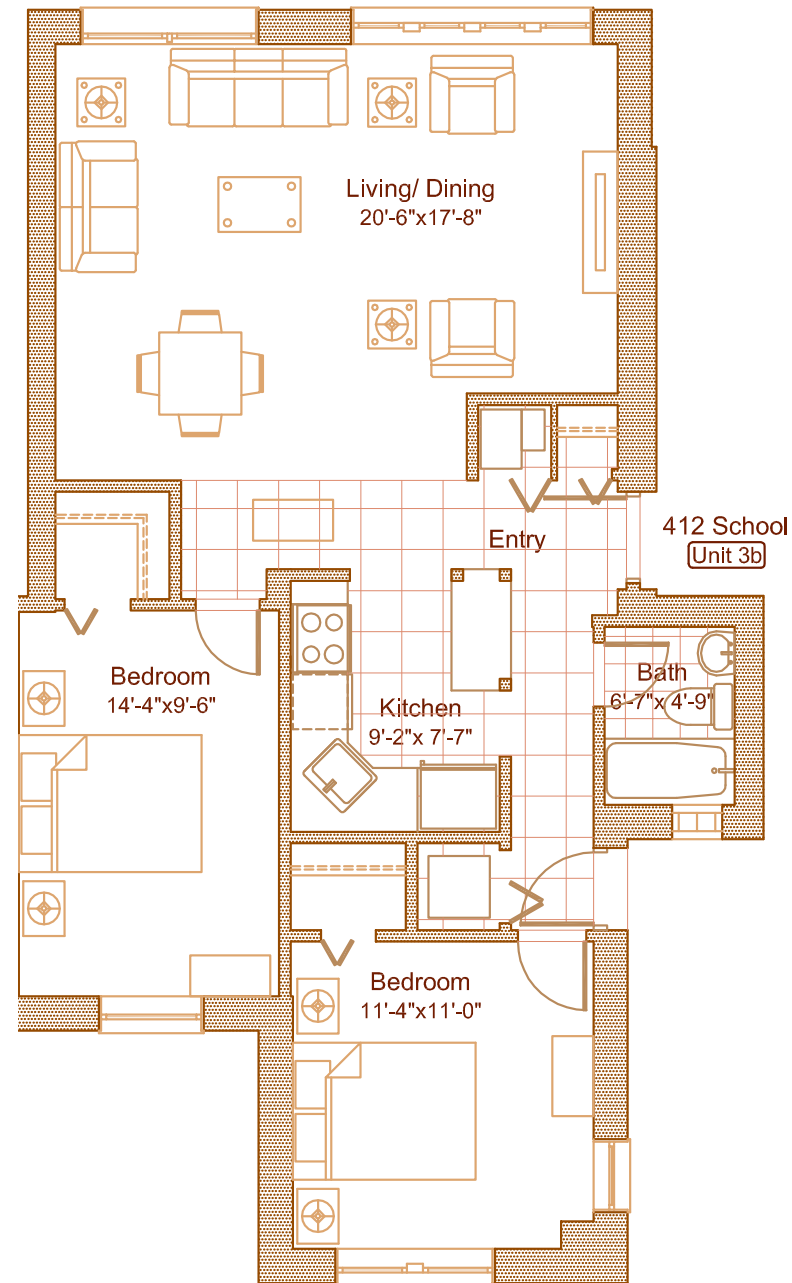
Unit 412-2A



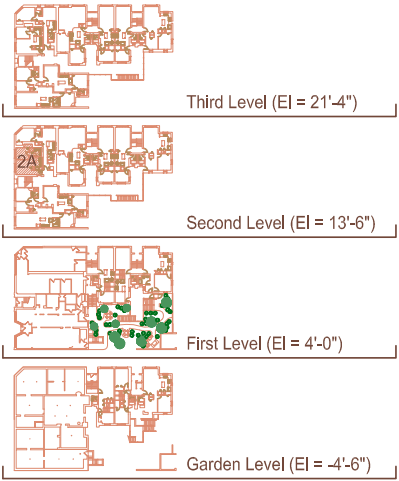
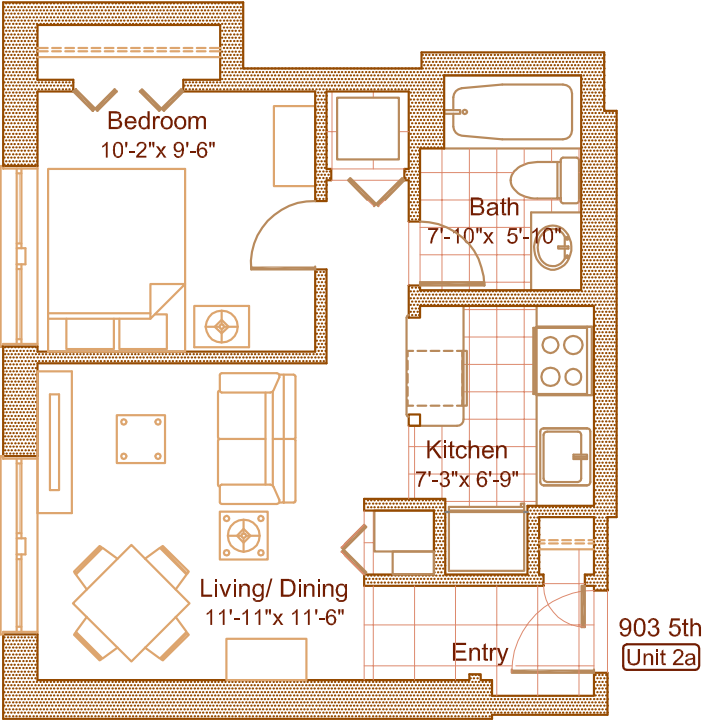
Unit 412-2B



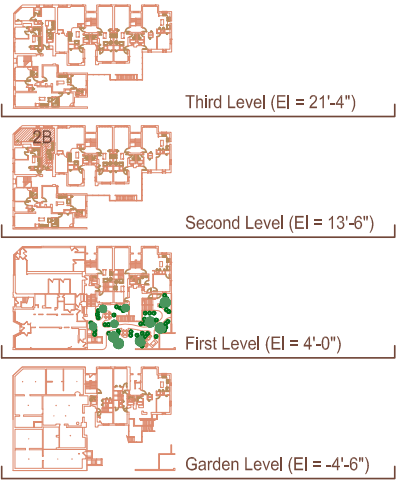
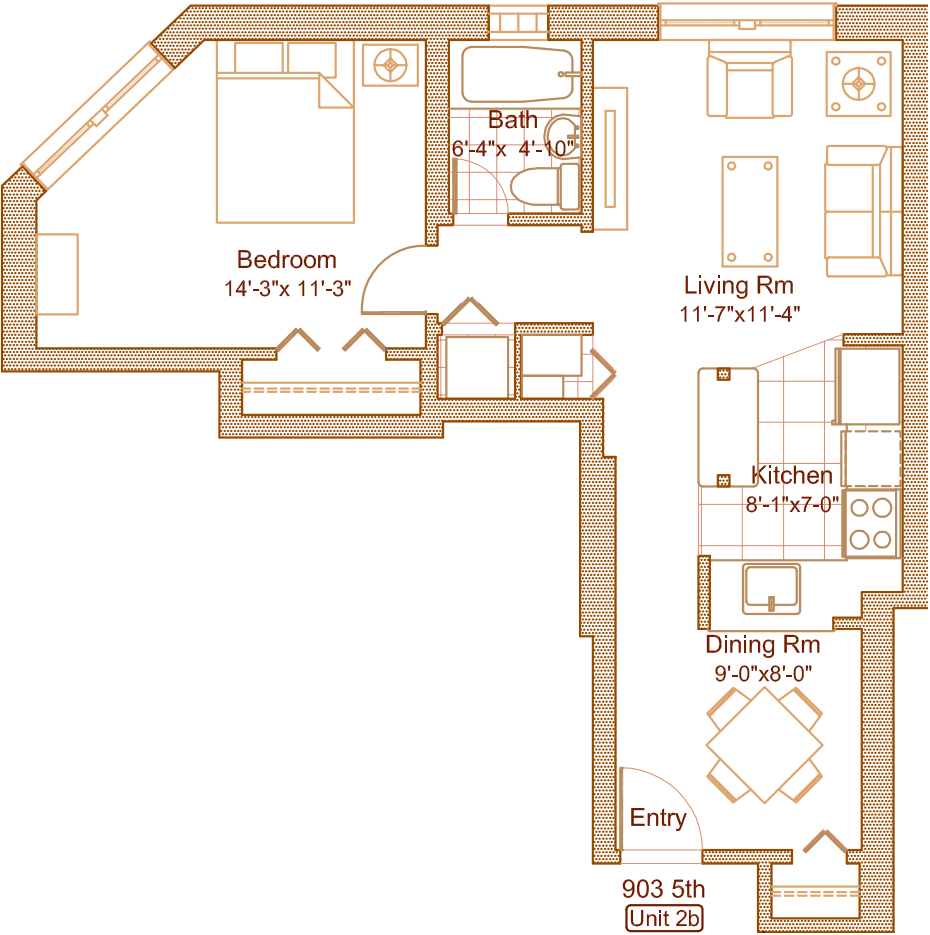
Unit 412-3A



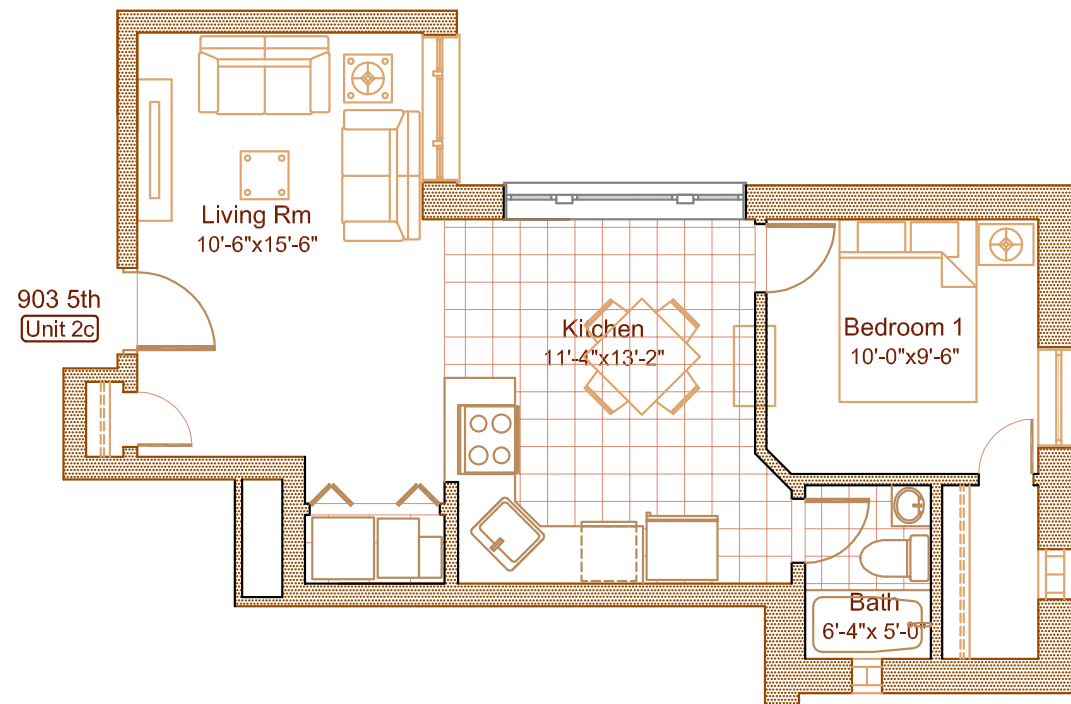
Unit 412-3B



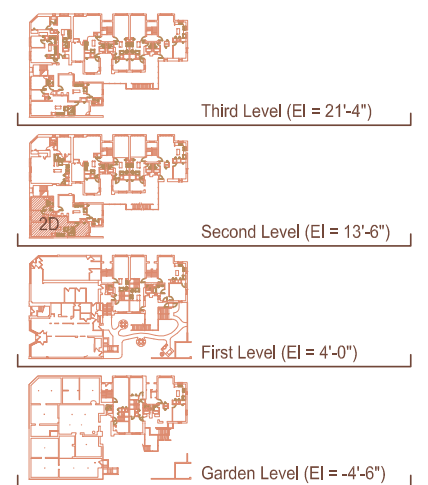
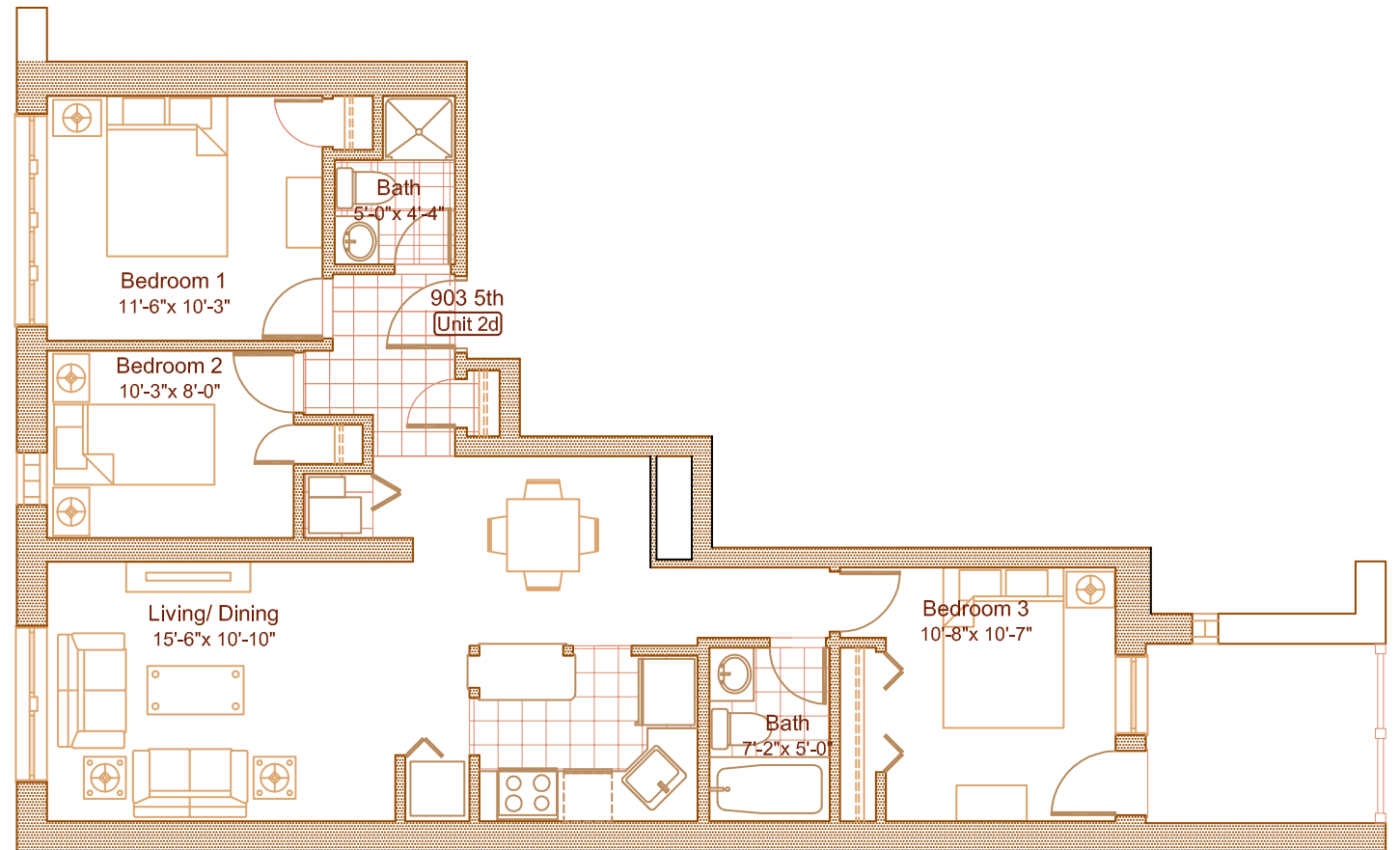
Unit 903-2A



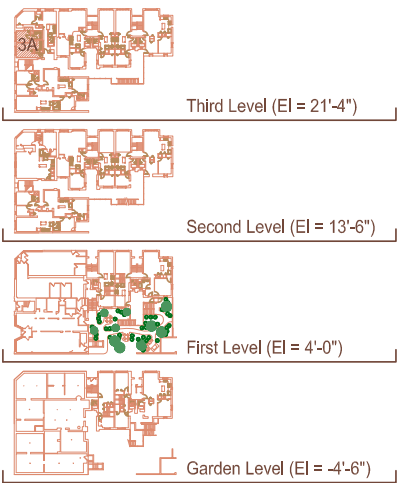
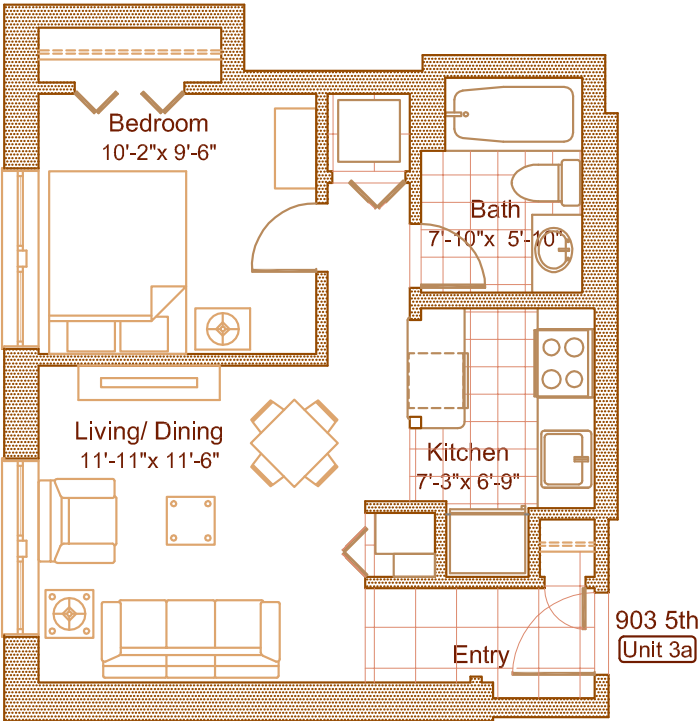
Unit 903-2B



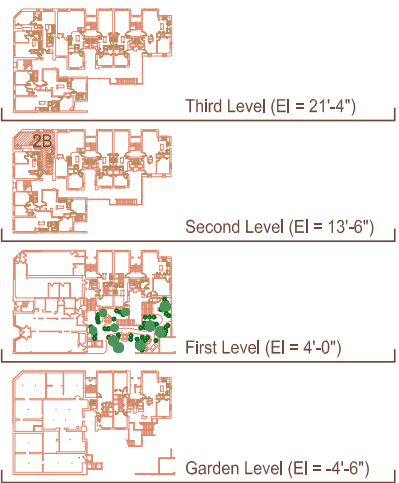
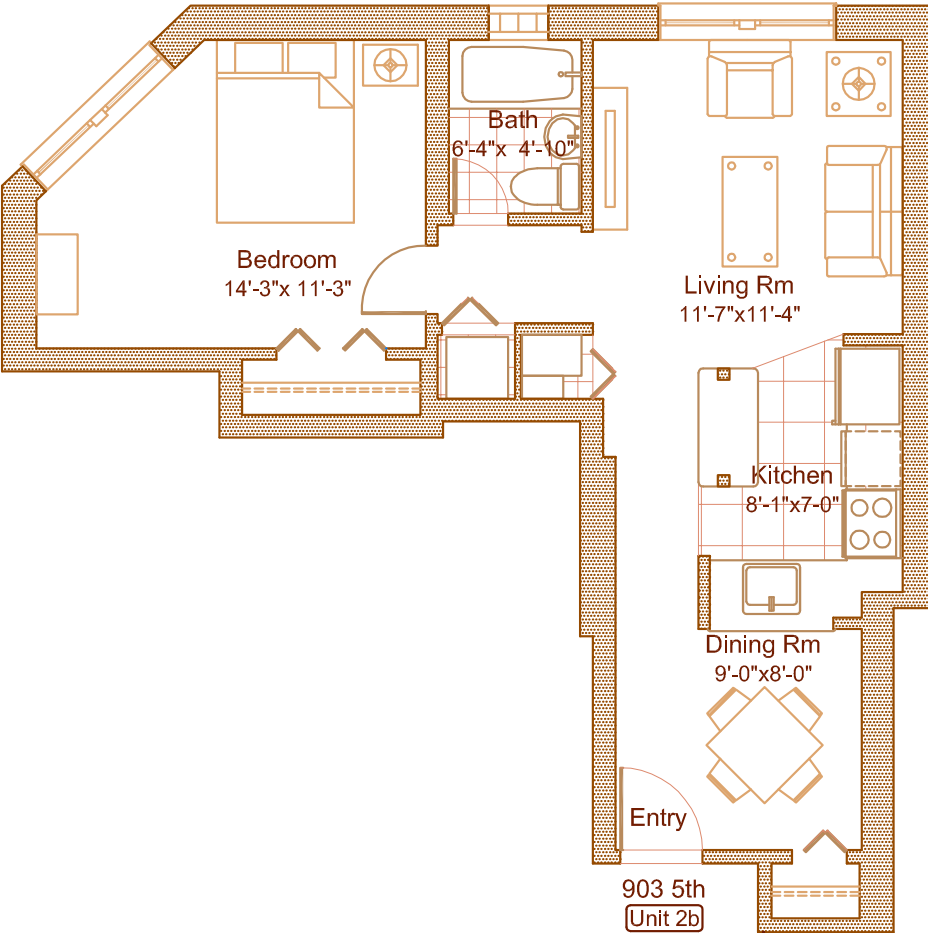
Unit 903-2C



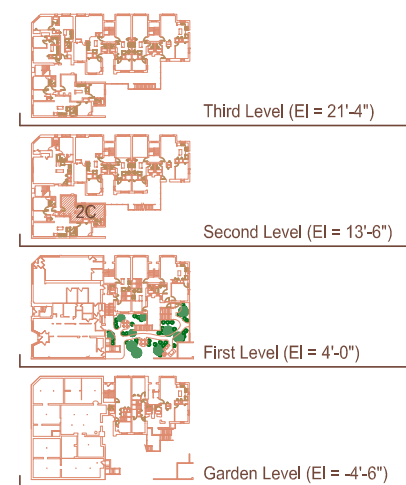
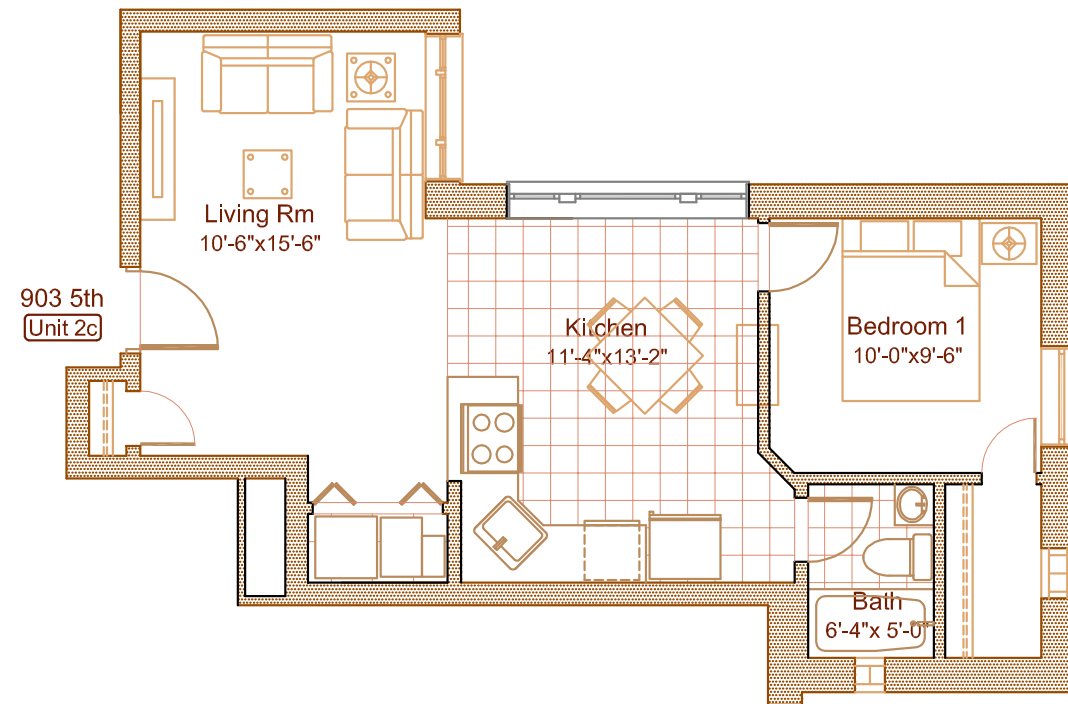
Unit 903-2D



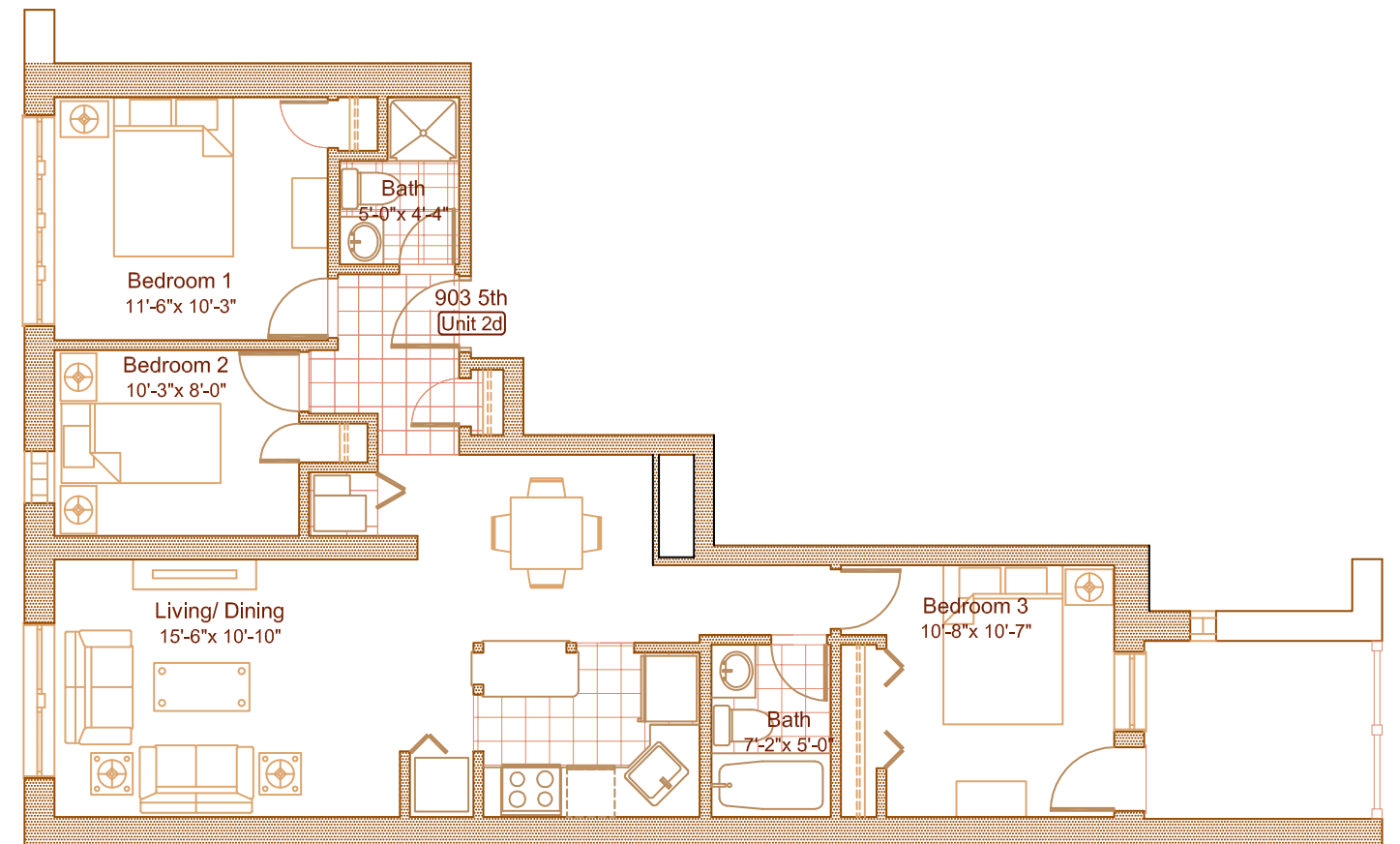
Unit 903-2A



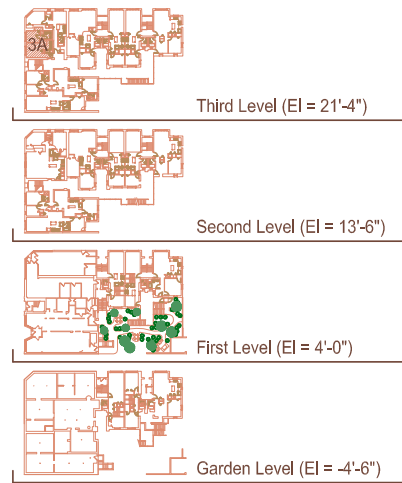
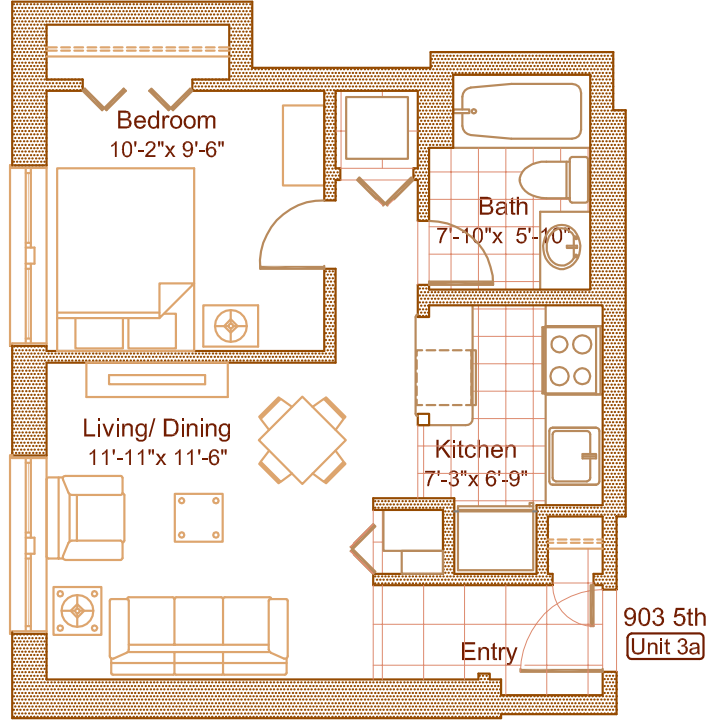
Unit 903-2B



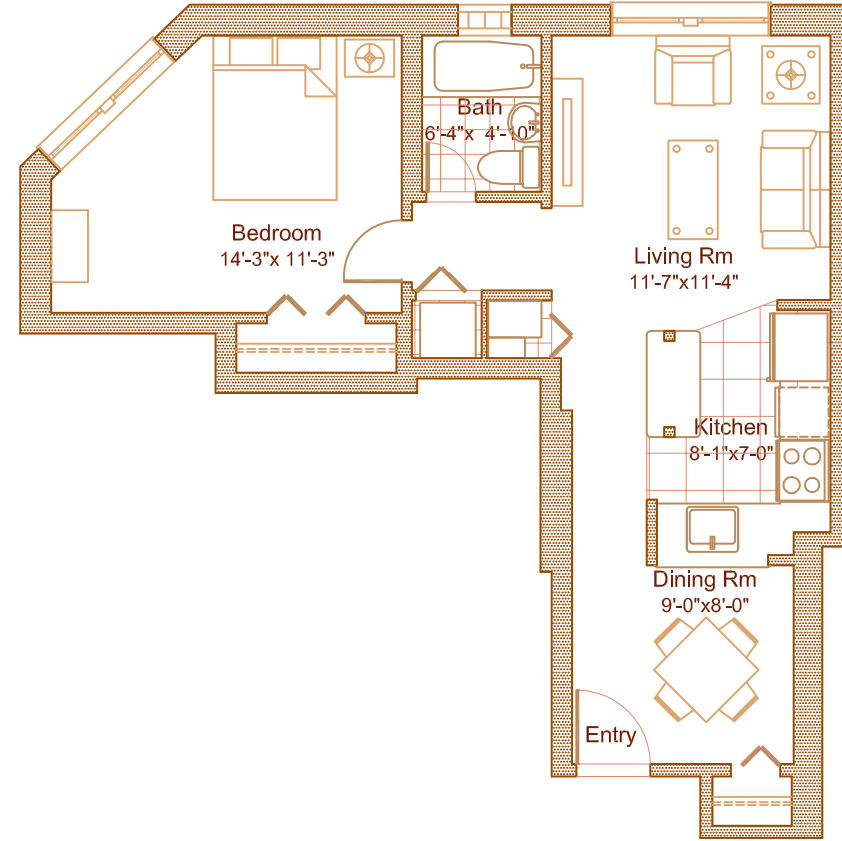
Unit 903-2C



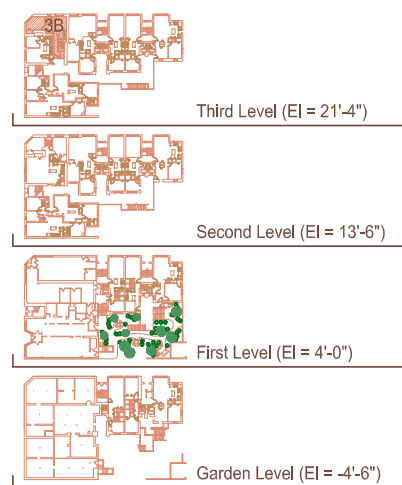
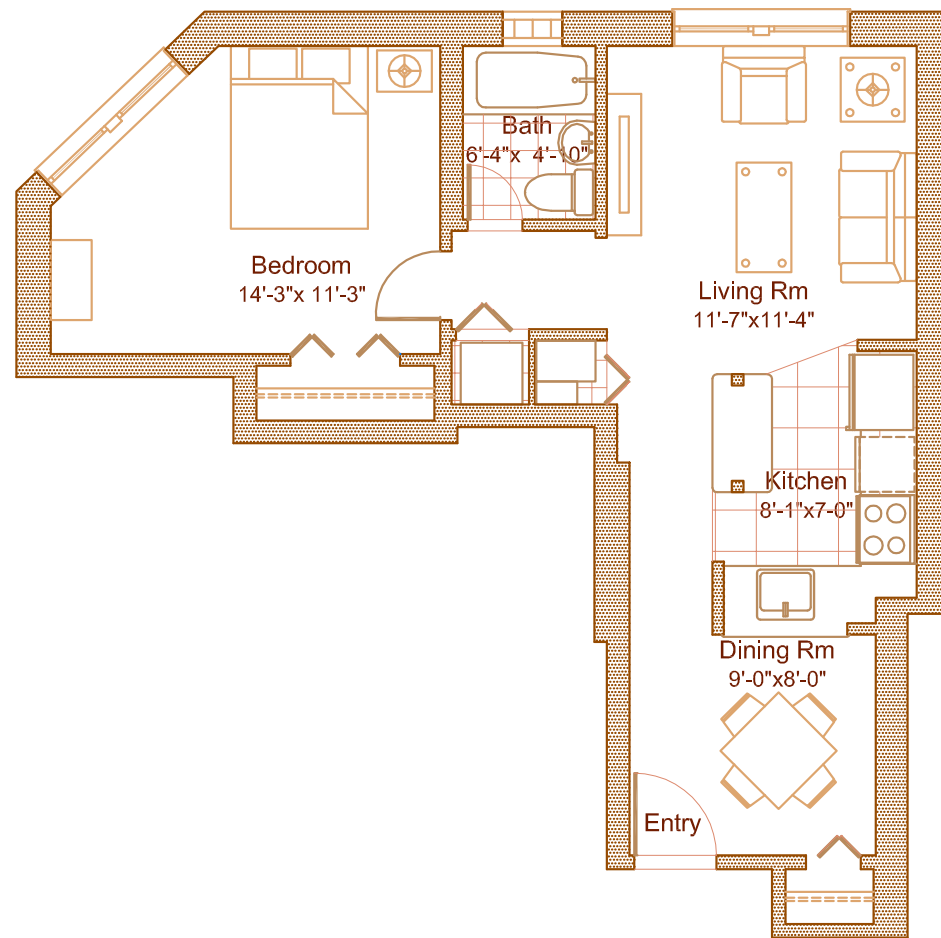
Unit 903-2D



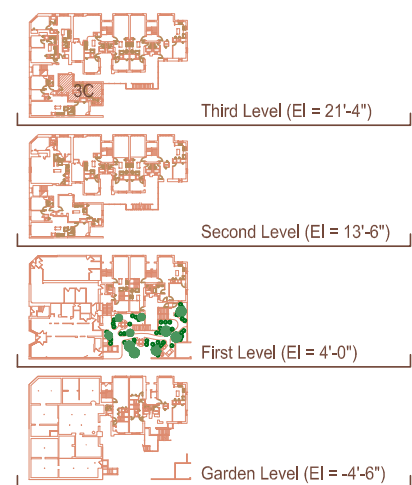
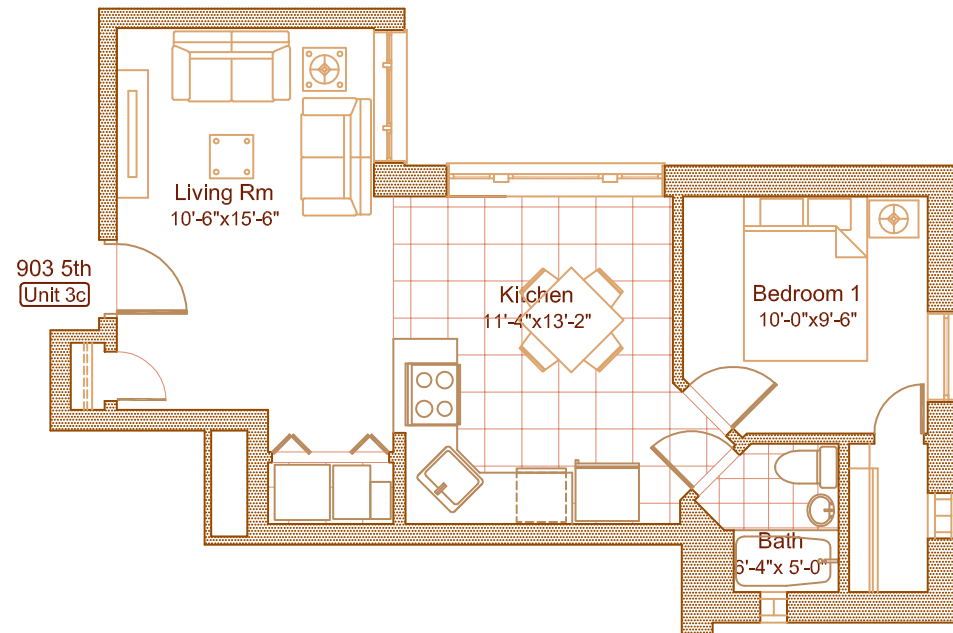
Unit 903-3A



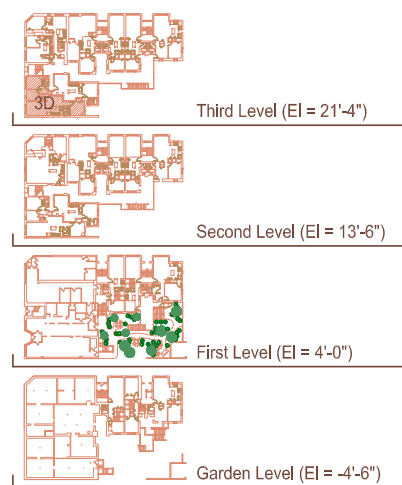
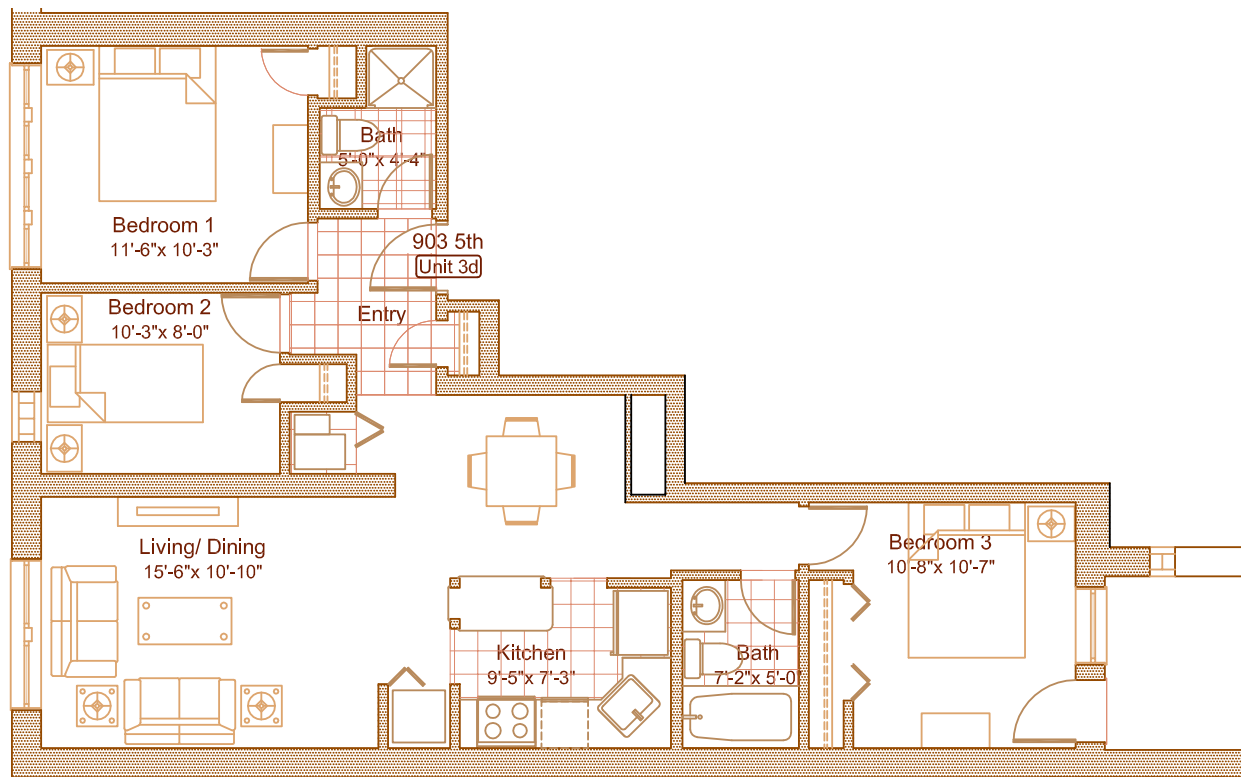
Unit 903-3B



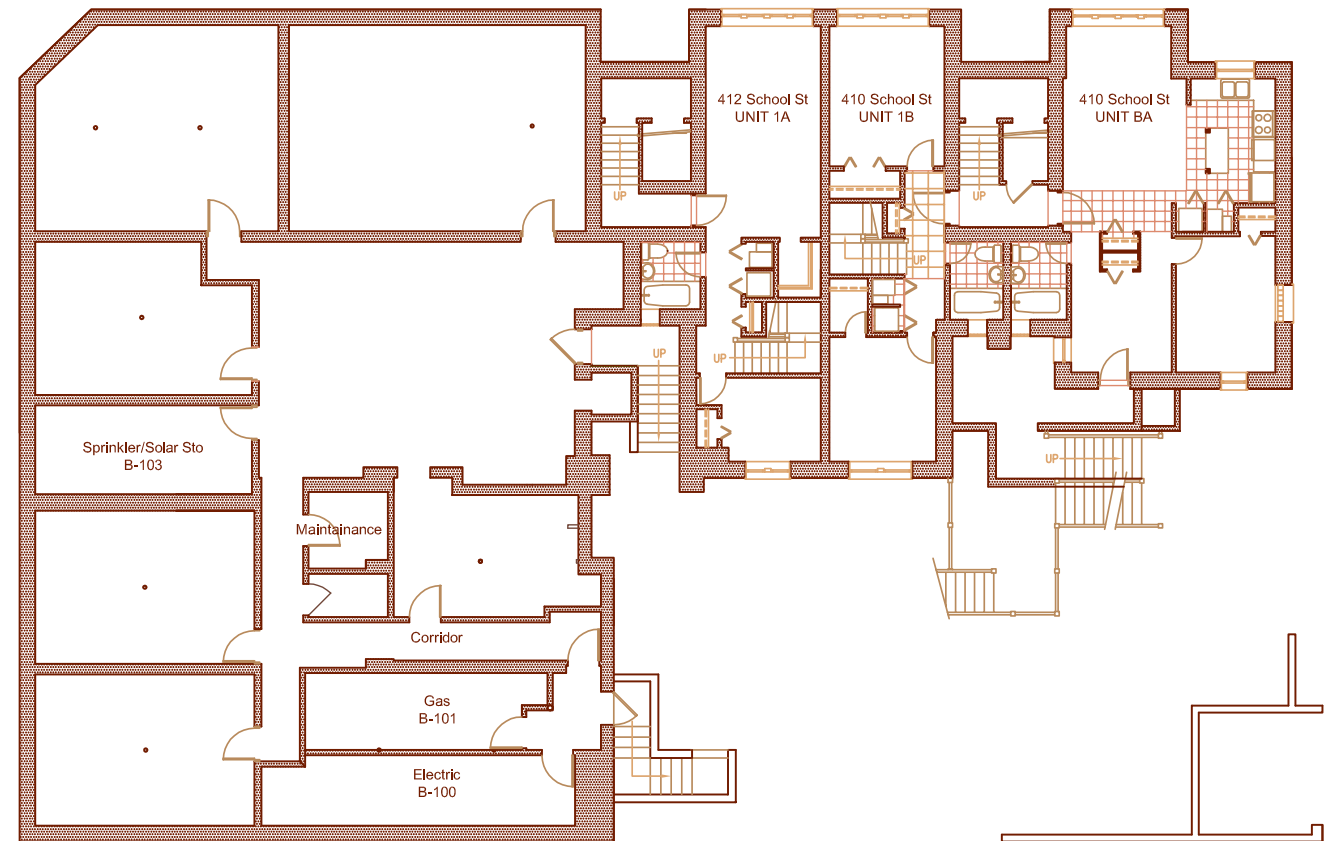
Unit 903-3B



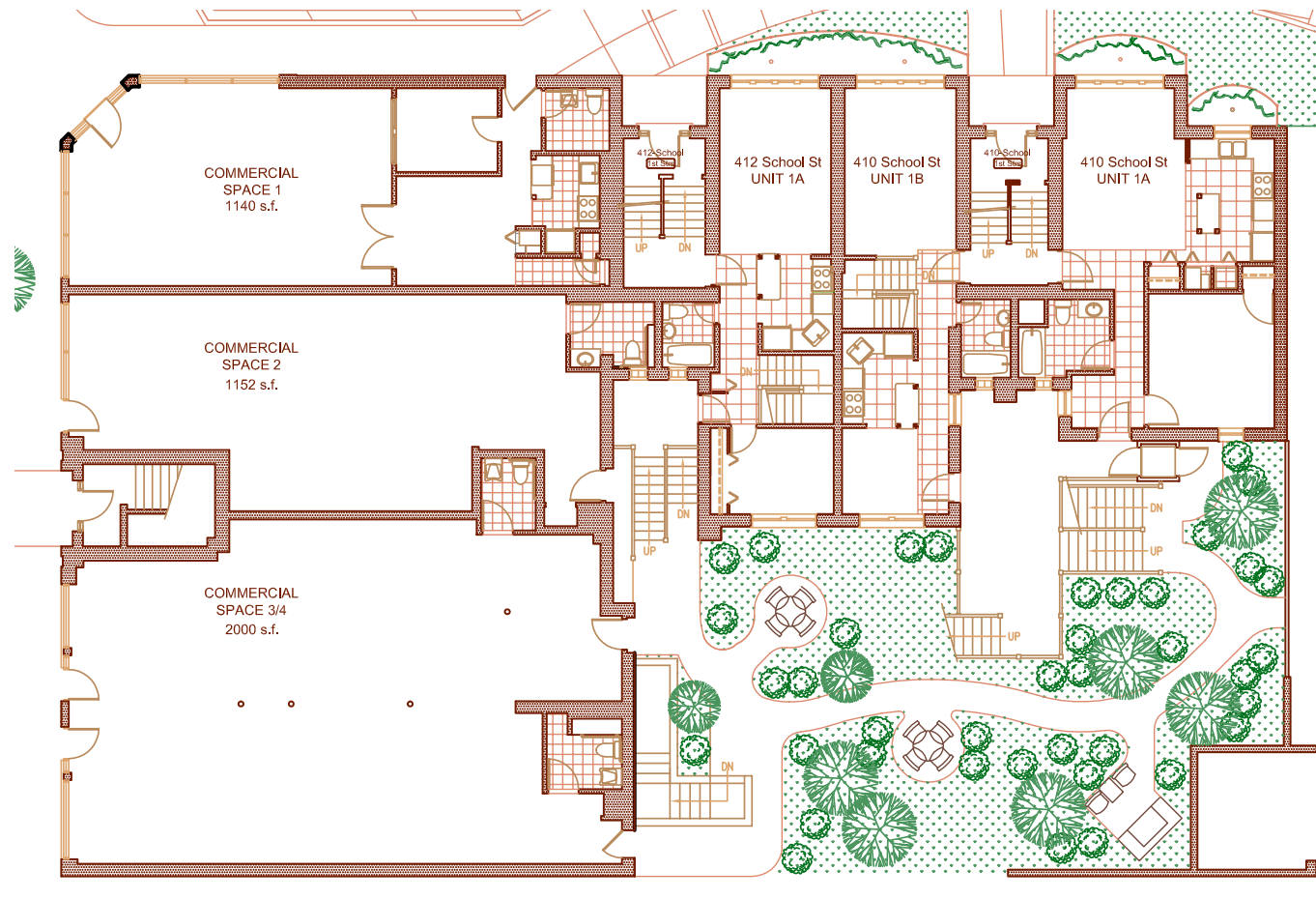
Unit 903-3C



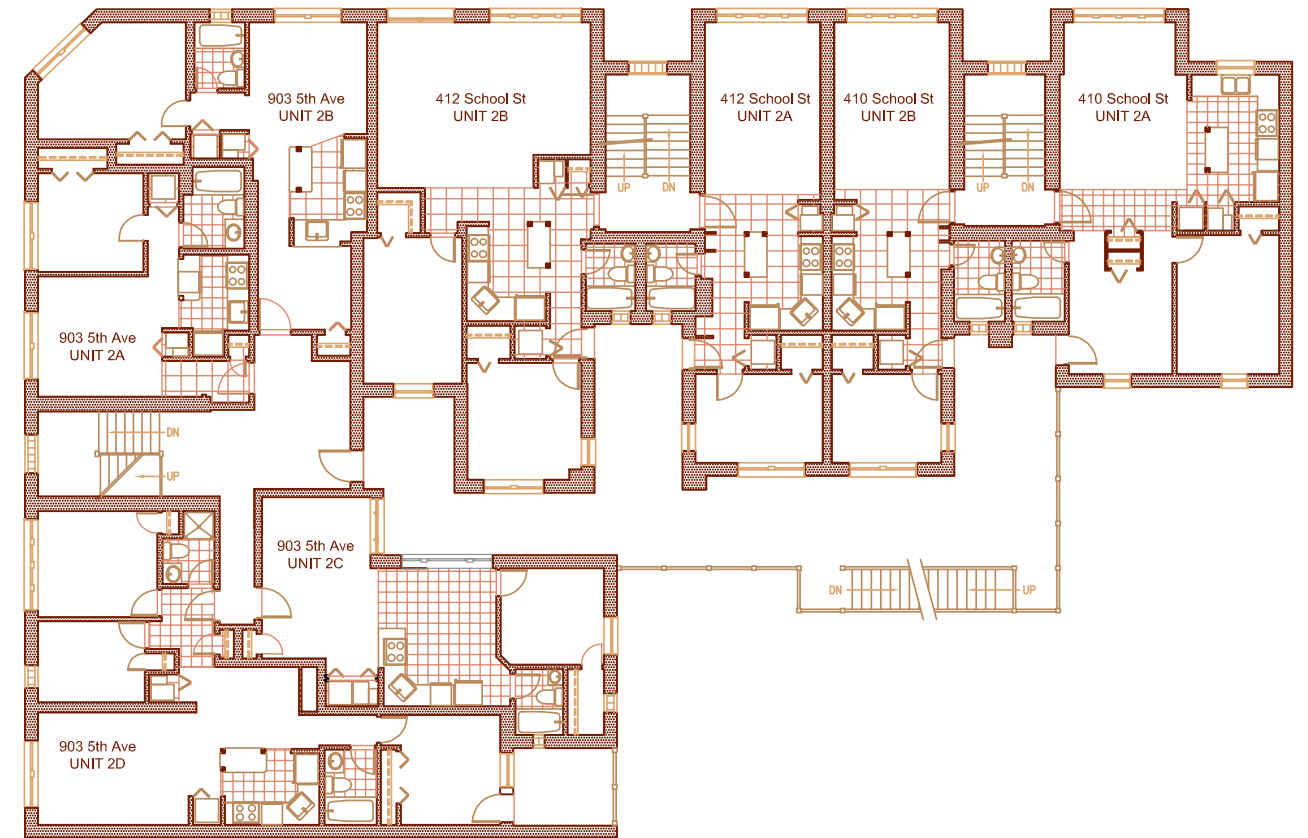
Unit 903-3D



Garden plan



First floor plan



Second floor plan

Our team

EXCLUSIVELY MARKETING BY:

ROC REALTY GROUP

Kevin J Rocio
 Zachary Tamburin
 @properties Sales & Marketing
 212 East Ohio Street, Suite 200
 Chicago, IL 60611
 T 312.506.0261
 E rocrealtygroup@atproperties.com

PREFERRED LENDER PERL MORTGAGE

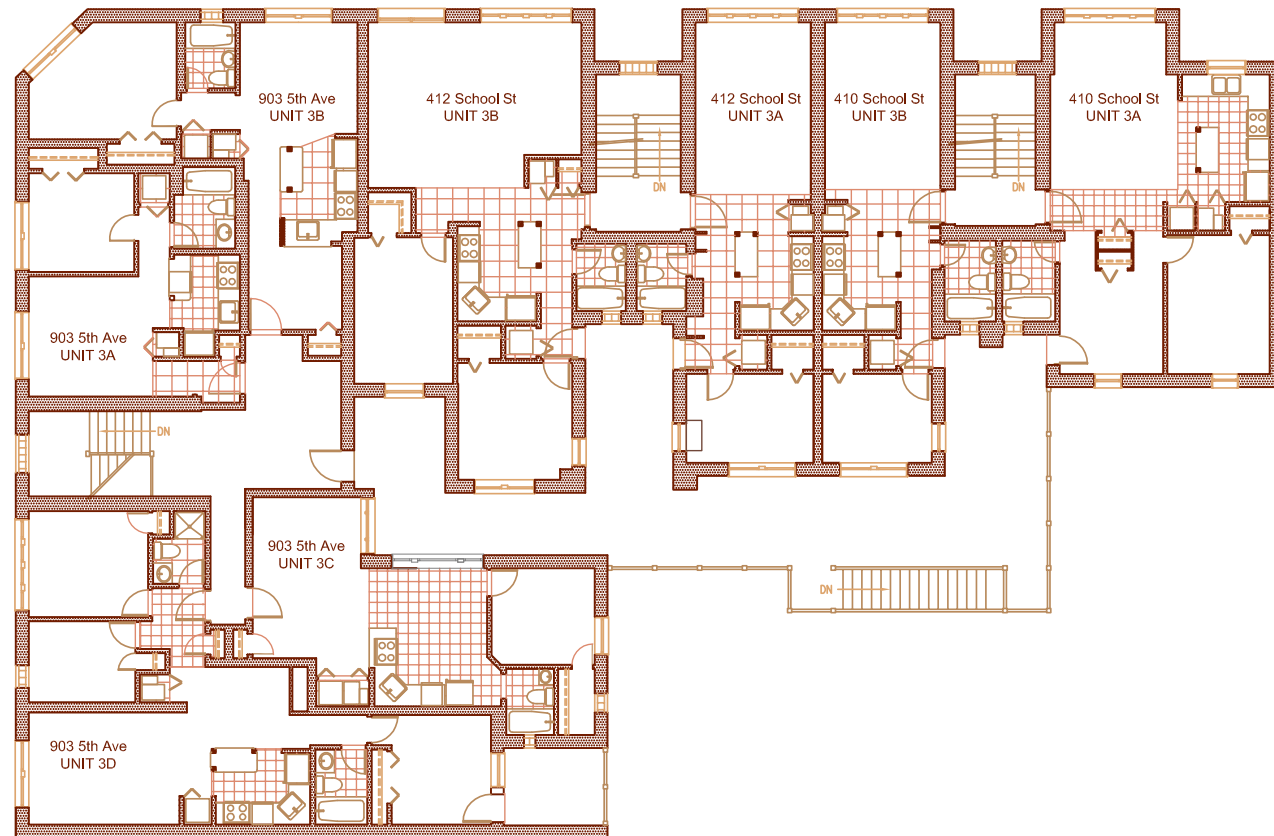
Amir Syed
 837 North Milwaukee Avenue
 Chicago, IL 60642
 T 312.376.3760
 E AMIR@PERLMORTGAGE.COM

DEVELOPMENT TEAM ARCHITECT

Errol Jay Kirsch Architects
 1046 Fair Oaks
 Oak Park, IL 60302
 T 708.386.9190
 W www.ejka.com

DEVELOPER

Imark Development LLC
 2531 Technology Dr. Suite 314
 Elgin, IL 60124
 T 877.252.1544
 W www.lillieplaza.com



Third floor plan

Neighborhood map



HIGH SCHOOL DISTRICT

Proviso Township High School Dist. 209

GRADE SCHOOL DISTRICT:

Maywood-Melrose Park-Broadview-89

NEAREST PUBLIC HIGH SCHOOL(S) IN DISTRICT:

Proviso East High, 807 S 1st Ave, 0.3mi E
Proviso West High, 4701 Harrison St, 3.3mi W

NEAREST PRIVATE HIGH SCHOOLS:

Walther Lutheran High, 900 Chicago Ave, 1.0mi N
Trinity High, 7574 Division St, 2.0mi NE
Fenwick High, 505 Washington Blvd, 2.6mi E

**NEAREST PUBLIC ELEMENTARY
SCHOOL(S) IN DISTRICT:**

Emerson Elem., 311 Washington Blvd, 0.2mi NE
Washington Elem., 1111 Washington Blvd, 0.4mi NW

NEAREST PRIVATE ELEMENTARY SCHOOLS:

James Mem. Christian Acd., 911 South 6th Ave, 0.1mi W
True Vine Christian Acd., 815 Lexington St, 0.7mi S

NEAREST DAYCARE CENTERS:

Sisters Daycare Inc, 1114 23rd Ave, 1.3mi SW
Angel Montessori School, 1112 9th Ave, 1.3mi N
Margery Daw Day Care Ctr, 407 25th Ave, 1.3mi W

NEAREST PUBLIC LIBRARY:

Maywood P.L.D., 121 S 5th Ave, 708-343-1847, 0.5mi N

NEAREST HOSPITAL:

Westlake Hospital, 1225 Lake St, 0.9mi NW
Loyola University Hospital, 2160 S 1st Ave

NEAREST MAJOR GROCERY STORES:

Aldi, 215 Madison St, 0.2mi E
Jewel, 7525 W Lake St, 1.5mi NE
Ultra Foods, 7520 Roosevelt Rd, 1.7mi SE

NEAREST MOVIE THEATERS:

Classic Cinemas Lake Theatre, 1020 Lake St, 2.0mi E
Cinemark Melrose Park, 1001 W North Ave, 2.1mi N

NEAREST HEALTH CLUBS:

DKW Fitness, 7517 Madison St, 1.3mi E
YMCA, 255 S Marion St, 1.9mi E

NEAREST GOLF COURSE:

Riverside Golf Club, 2320 Desplaines Ave, 2.4mi S

NEAREST STARBUCKS:*

7231 Madison Ave, Unit #1, 1.7mi E

NEAREST CTA STATION:

Forest Park, Blue Line, 1.2mi E